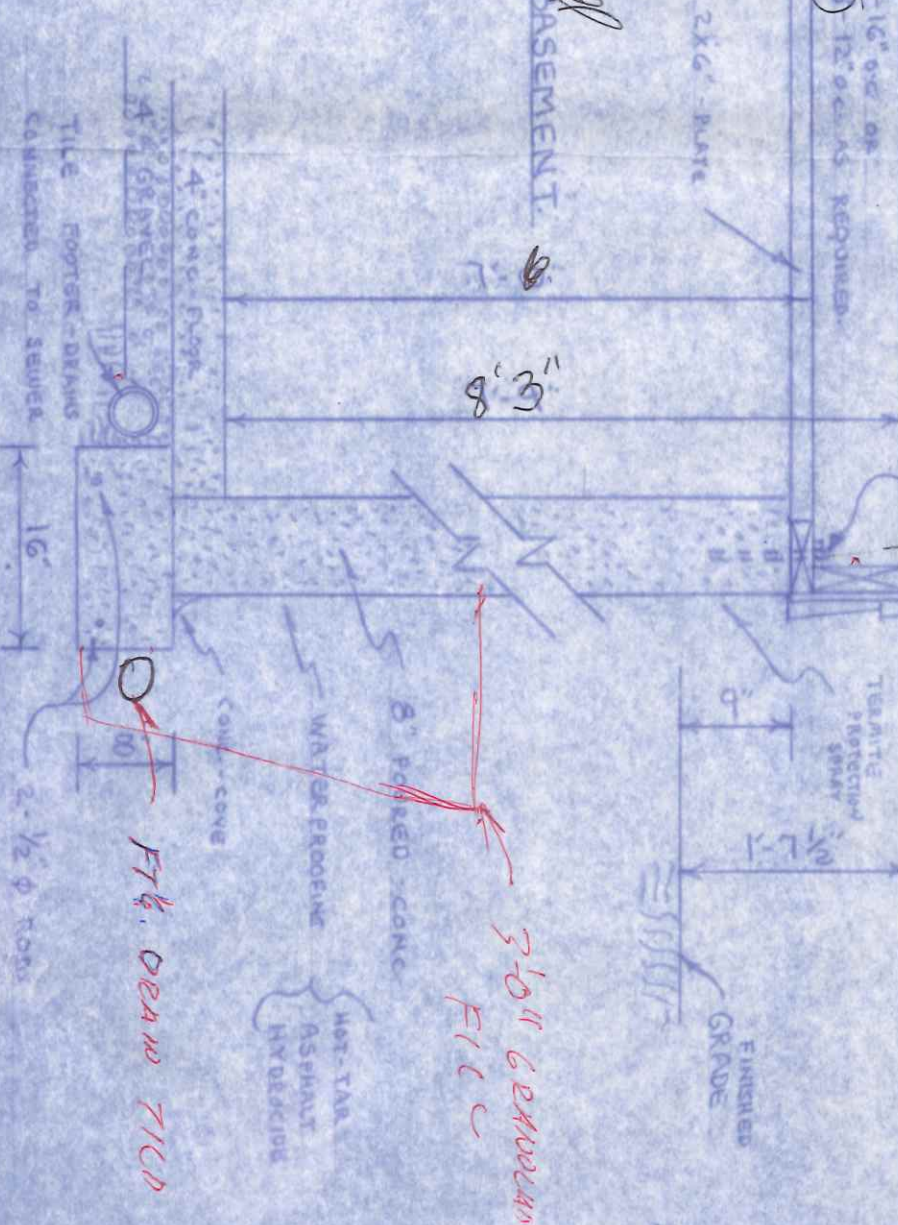


1st floor  
2nd floor  
Basement



70 Borders

6'-0" MIN.

ORIGINAL  
11/2" - 16" o.c.  
5/8" - 210" o.c.

3/4" (PLY-1)  
SUBFLOORING

8'-0" CER. HT  
8'

7'-8" CER. HT  
7'-8"

3/4" T+G

8'-3"

SOFFIT (WEB)

3'-0" CER. HT  
F.I.C.C.

FT. 4. DEARD T.I.C.C.

BORDEAUX DR. 60' R/W

